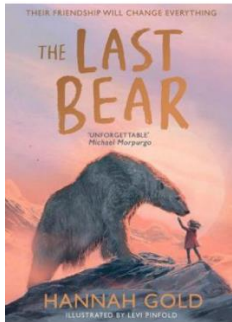


Extract: The Last Bear

Author: Hannah Gold



April Wood came face to face with the polar bear exactly three weeks after she had arrived on Bear Island. But before that, she had to get to Bear Island in the first place, and that journey began approximately four months earlier.

Up until that point, there had been a normality to April's everyday life, although she was the first to admit it was a rather odd kind of normality. Her father worked as a scientist in a nearby university, where he spent his days researching weather patterns. Like the weather, he came and left the house at the most unpredictable of times – sometimes he'd get home at eleven p.m., or he would leave just when she got home from school. He worked random weekends but would then have three days off in a week. Even then he would shut himself in a study and bury his face in dusty, old books with writing so tiny it made your eyes hurt just to read them. When April brought him a pot of tea or his dinner, he would shake his head, take off his glasses and look at her curiously as if he had completely forgotten he had a daughter. "Oh," he would say. "Thank you...April." Then he would put his head back down, chew the top of his pen and she would gently close the study door behind her.

## Summary

What is this extract about? Can you summarise it in 3 bullet points?

- 
- 
- 

## Retrieval questions

1. What is the name of the main character?
2. When did April come face to face with the polar bear?
3. Find a word in the text that means 'likely to change suddenly and without reason or warning'.
4. What was her father's job? Tick one.

Presenter

Scientist

Teacher

Explorer

## Inference and deduction questions

1. What do you know about April?
2. Why do you think it says that there was 'a rather odd kind of normality' when the author describes April's everyday life?
3. What hints are there in the text that suggest that the father behaved in such a way as if he had forgotten that he had a daughter?
4. Why do you think the place is called Bear Island?